

Plotting with AutoCAD 2000 :

- □ This document will explain how to get up and going with AutoCAD 2000 and making plot files that will print correctly out of Repro Desk.

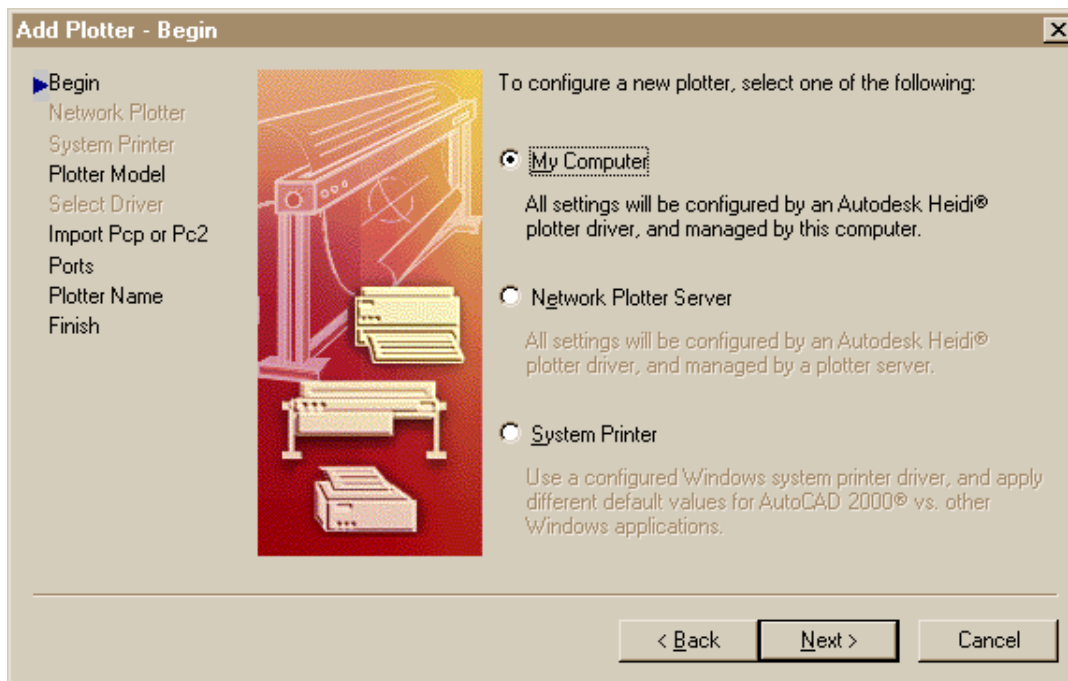
Installing and Configuring the HPGL/2 Driver

- □ The driver we recommend to use in AutoCAD 2000 is the DesignJet 755 cmc3198A.

In order to modify the printable area of the paper (the margin settings) you will need to go to the configuration menu of the HPGL/2 driver. You can reach this configuration menu 2 different ways.

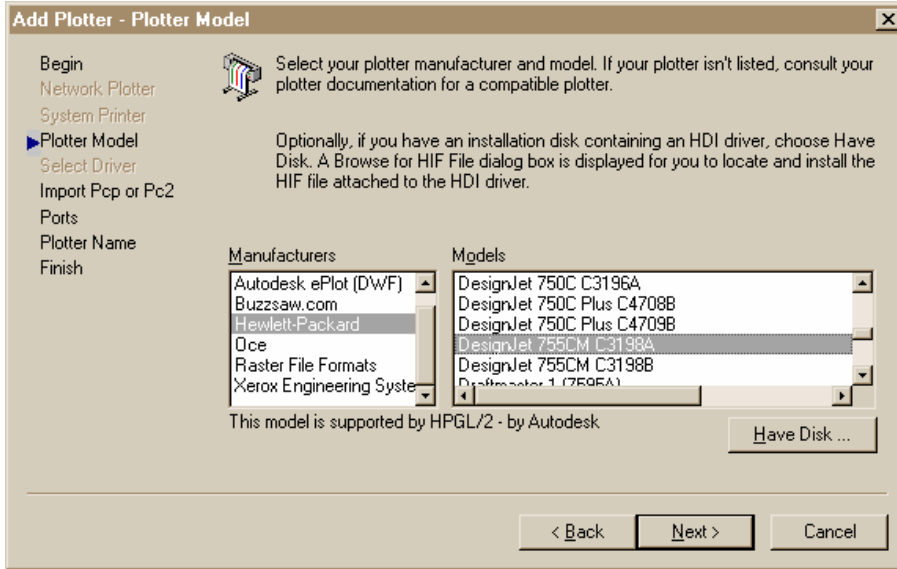
1. This method should be used if you are installing the HPGL/2 Driver for the first time. During the last step of this wizard you will be able to access the configuration menu.

- □ Go to File→Plotter Manager and double-click on the “Add a Plotter Wizard” item.

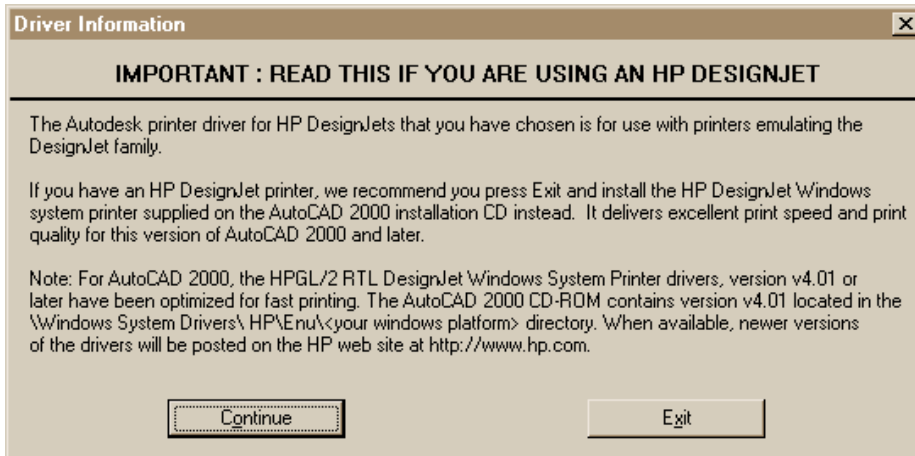


- □ Select “My Computer”, then click the “Next” button.

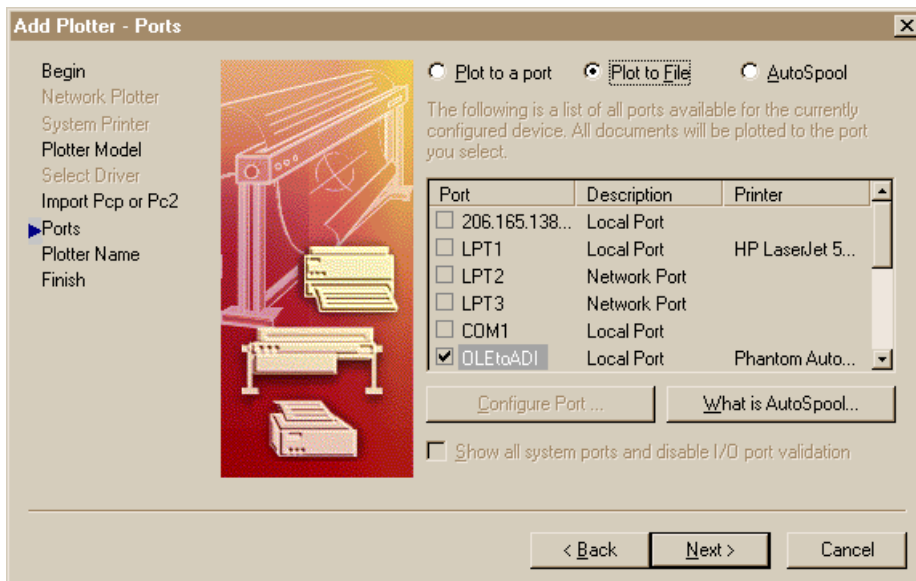
- □ In the Plotter Model dialog, choose the Hewlett Packard DesignJet 755 cmc3198A.



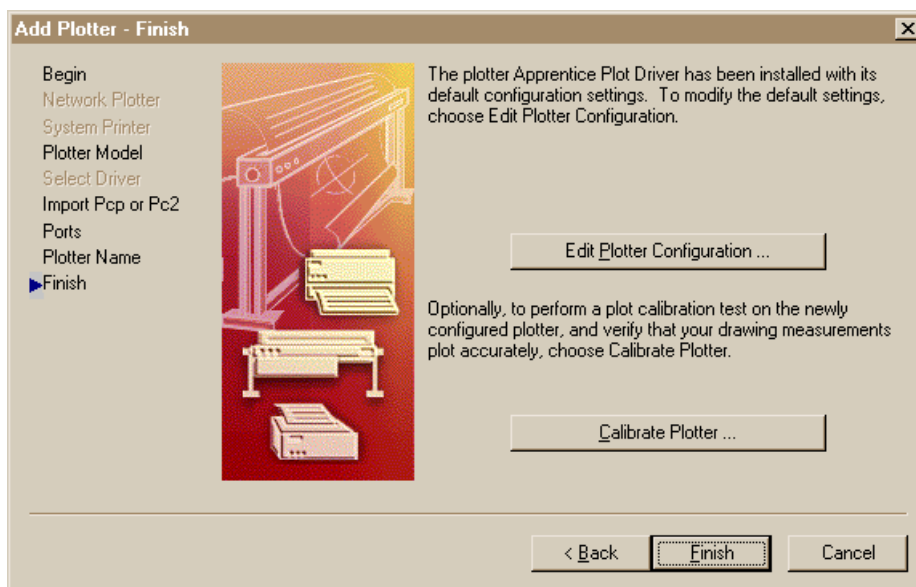
- □ Click "Next". You will see the following message, describing HP drivers that can be found on the AutoCAD 2000 CD:



- □ Repro Desk4.25 does NOT support these new drivers. They embed Windows Printing Language commands into the .plt files that Repro Desk does not recognize.
- □ Press "Continue".
- □ The next step of the wizard will allow you to select and use a previous PC3 file. Press "Next".



- You will be asked to provide the 'port' settings. Click on the 'Plot to File' option as shown below.
- □ After you have selected a port, it will ask you to name the plotter. You can create your own name or select the default provided.

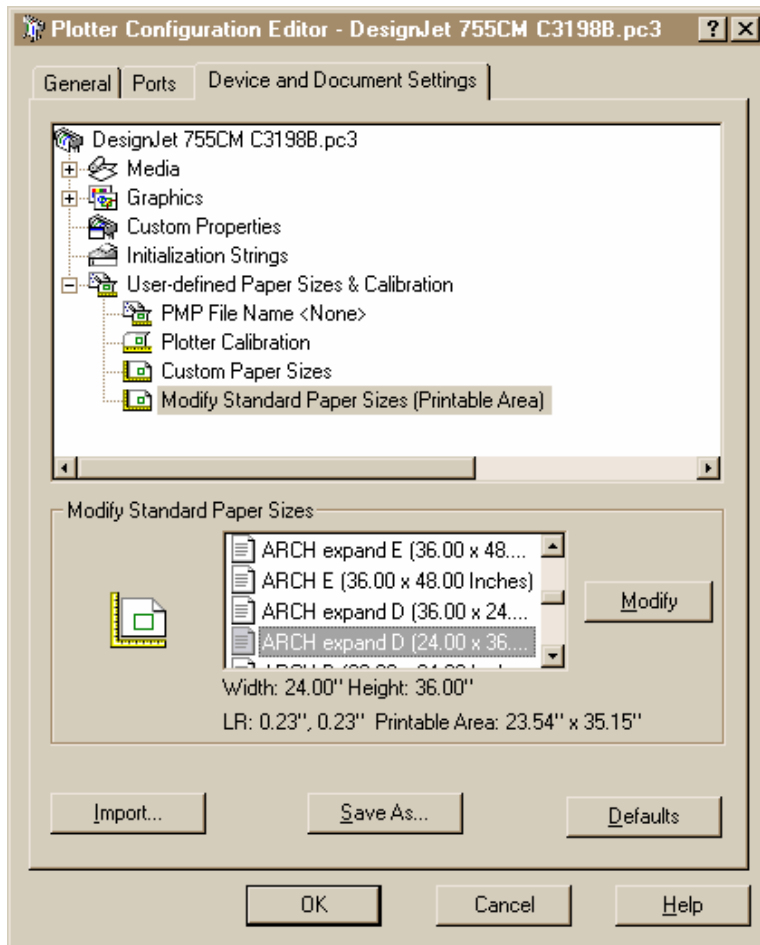


- □ The final step of the wizard will allow you to configure the plotter. Press the "Edit Plotter Configuration" button.

Paper Size Configuration

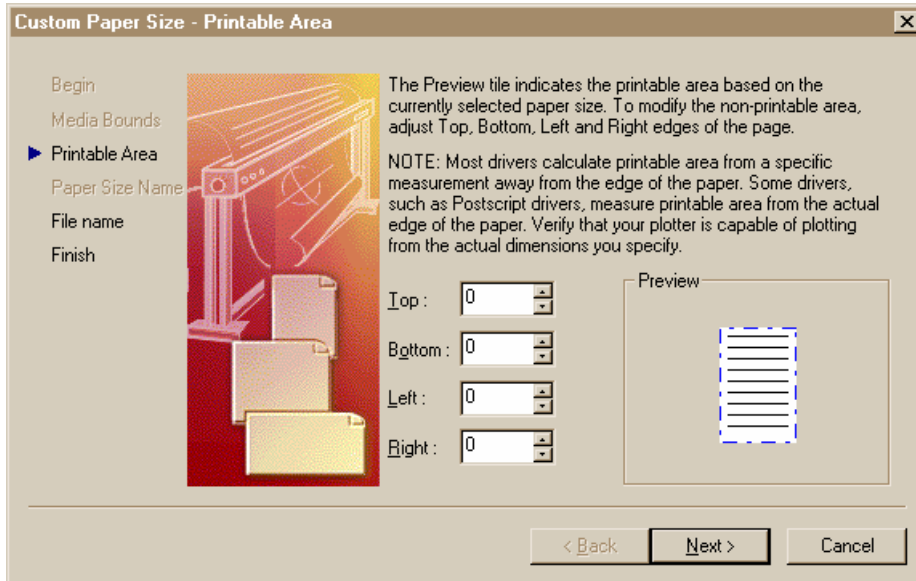
Once the Plotter Configuration menu is displayed, you are given the opportunity to configure the paper sizes and printable area margins.

- ❑ ❑ Select the "Device and Document Settings" tab.
- ❑ ❑ Select the "Modify Standard Paper Sizes (Printable Area)" menu item.



- ❑ ❑ Once selected, the list of available paper sizes will be displayed at the bottom of the dialog box, along with the margins and printable area for each paper size.

- □ Select the paper size you want to change, and then press the “Modify” button.



- □ The “Custom Paper Sizes” wizard will now be displayed.
- □ If the desire is to print to the edge of the paper (what most people want) then the margin settings need to all be set to 0.00.
- □ The second step of the wizard will allow you to name the PMP (Plotter Model Parameters) file. Define a custom name or accept the default value.
- □ The last step of the wizard enables you to print a test page.
- □ Press “Finish” and it will generate the PMP file. Any time you select that paper size, it will default to the settings just entered.
- □ You will need to repeat these steps for each paper size you intend to use.

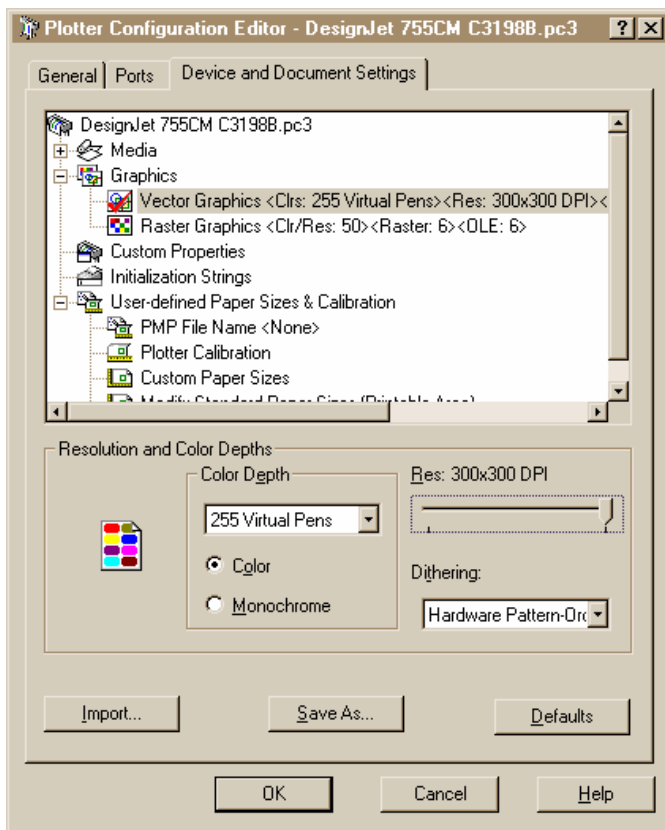
Plotter Configuration

If you create a plot file in AutoCAD 2000 you may find that the pen numbers get jumbled up when you bring that file into Repro Desk. This shouldn't be a problem if nothing needs to be done to the plot file after you bring it into Repro Desk, because Repro Desk will use the pen information embedded in the plot file. However, it will be a problem if you have to make changes to line weights and colors using a Repro Desk pen set, or if screening patterns are needed.

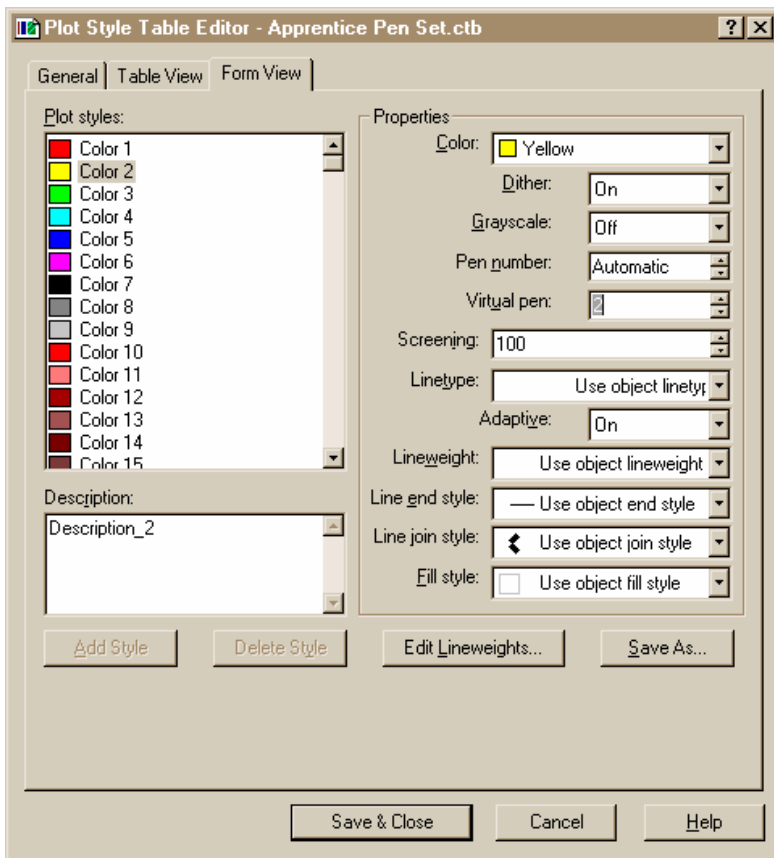
Here's what you (or your customer) can do to correct that problem:

*****If you have not yet configured the plotter, then follow the steps in the previous section entitled 'Selecting and Configuring the HPGL/2 Driver'***

1. In AutoCAD 2000, Select the File menu > Plotter Manager.
2. In the Plotter Manager double-click on the device you use for plotting.
3. Select the Device and Document Settings tab.
4. Select the plus sign next to 'Graphics.'
5. Select Vector Graphics.
6. In the Resolution and Color Depths section of the dialog box, choose the Color Depth drop-down menu and select '255 Virtual Pens' (HP) or '256 shades of gray' (OCE).



7. Choose OK.



- In order for the pens to map correctly, you must ensure that each Plot Style you are using has the "Virtual Pen" assigned to their respective pen color (i.e.-- Virtual Pen #1=color 1, Virtual Pen #2=color 2, etc....).
- □ Do this by entering the plot style manager, choosing your desired plot style (colors), and changing the virtual pens from "Automatic" to match the color number. Also change your pen color to match the color of the plot style.

In some cases, if AutoCAD 2000 was used to upgrade AutoCAD 14, or the option to migrate the plotter configuration files over to the new format was chosen, a plot style called "Default R14 Pen Assignments" will be available, and should be used. This plot style already has the virtual pens mapped correctly. Otherwise it requires that you change all the virtual pens from Automatic to the correct pen number. This plot style is included in the zip file that this document was included with, called "Apprentice.ctb"

Additional Information on Virtual Pens

When using Virtual Pens in AutoCAD 2000 it is important to note that line weights and screening patterns do NOT get written into the plot file. AutoCAD treats this as if you had an old-style pen plotter that has a programmable pen set on board the plotter. **Line weights, screening values and other effects MUST be done in a Repro Desk pen set.**

